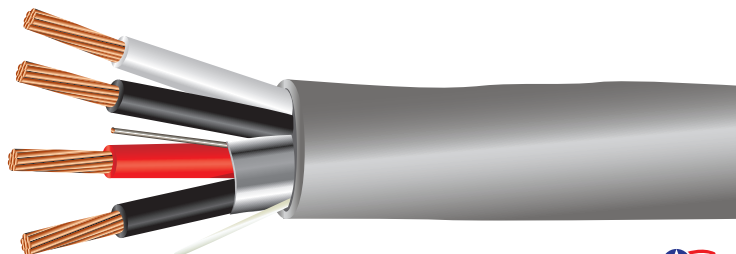


COMMUNICATION & CONTROL

UNSHIELDED & SHIELDED PAIRS

CMR/CMG FT4 Rated, FPLR, CL2R, CL3R



RoHS Compliant

Cables are manufactured to meet current NEC guidelines and are verified by outside standards organizations including c(UL)us and c(ETL)us.

PART NO.	AWG/ COND	STRAND	OUTER JKT THICKNESS		NOMINAL OD		SHIP WT / 1M'
			INCH	mm	INCH	mm	
22 AWG							
12221RSD	22/2 1 pr Shld/1 pr Unshld	7	.015	.38	.211	5.36	18
12222RSD	22/2 Each Pair Shielded	7	.015	.38	.220	5.59	21
12232RSD	22/3 Pair Overall Shield	7	.015	.38	.224	5.69	26
12233RSD	22/3 Each Pair Shielded	7	.015	.38	.234	5.94	33
122012RSD	22/3 2 pr Shld/1 pr Unshld	7	.015	.38	.179	4.55	31
122014RSD	22/4 2 pr Shld/2 pr Unshld	7	.015	.38	.178	4.52	34
20 AWG							
120013RSD	20/3 2 pr Shld/1 pr Unshld	7	.015	.38	.199	5.05	37
120014RSD	20/4 2 pr Shld/2 pr Unshld	7	.015	.38	.201	5.11	46
18 AWG							
11821RSD	18/2 1 pr Shld/1 pr Unshld	7	.015	.38	.262	6.65	34
11822RSD	18/2 Each Pair Shielded	7	.015	.38	.281	7.14	41
118232RSD	18/3 pr Overall Shield	7	.015	.38	.289	7.34	52
11833RSD	18/3 Each Pair Shielded	7	.015	.38	.299	7.59	55
118014RSD	18/4 2 pr Shld/2 pr Unshld	7	.015	.38	.219	5.56	69

PRODUCT DESCRIPTION

PVC insulated stranded bare copper conductors, short overall twist length, aluminum mylar shielding with drain wire and an overall grey PVC jacket.*

*Other colors available upon request. Please consult factory for minimums and lead times.

SPECIFICATIONS

Conductor	Bare Copper
Insulation	
22 AWG	.007"
20 AWG	.008"
18-16 AWG	.010"
14-12 AWG	.012"
Jacket	PVC
Shield	Aluminum Mylar
NEC Articles	FPLR/760, CMR/800, CL3R, CL2R/725
Voltage Rating	300 V
Temp. Rating	75°C
Drain Wire	22-20 AWG: 26 AWG 18 AWG: 24 AWG

APPLICATIONS

- Security Systems
- Intercom Systems
- Sound/Audio System
- Power-Limited Controls

COLOR CODE CHART

Pairs	Color
1	Black/Red
2	Black/White
3	Black/Green
4	Black/Blue

AVAILABLE PUT-UPS

1,000' Reels and Boxes
500' Reels and Boxes
Other lengths available. Please consult your factory representative for availability.

*14-12 AWG are not recognized by c(UL) or c(ETL).

