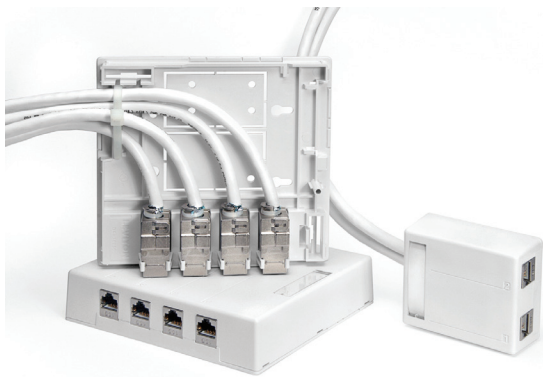


Surface-Mount QuickPort® Housings for Shielded Connectors

APPLICATION

Surface-Mount Housing accepts two or four QuickPort shielded connectors (sold separately). Use to support voice/data applications in open office, retrofit, and other surface-mount environments. Surface-mount housings are compatible with all QuickPort snap-in modules and connectors, and are available in two colors (white and ivory).



SPECIFICATION

Surface-mount telecommunications housings shall be a high-density low-profile design with two or four field-configurable ports, snap-lock cover, and cable knockouts on housing base. Housing cover (4-port) shall have raceway knockouts for top, bottom, and side entry. Base shall include tie-wrap anchor points at all cable entrances. The housing shall be mountable with screws, tape, or magnets, and have mounting holes compatible with standard NEMA and Euro wall boxes. The cover shall provide the option of securing it to the base with a screw that is hidden under the identification window. Colors and configurations to be specified per schedule on plan. Must be constructed of high-impact fire-retardant plastic rated UL 94V-0, and be cULus Listed and compliant with ANSI/TIA-568-C.0 specifications.

FEATURES

- All ports are on one side; the housing mounts horizontally or vertically
- Designation label provided for identification
- Specially designed for use with Leviton shielded connectors
- Compatible with all QuickPort connectors
- Knockouts in cover are compatible with major raceway brands
- Includes two self-tapping screws and two pieces of 1-inch double-back adhesive tape

DESIGN CONSIDERATIONS

- Side or rear cable entry
- Product will mount with tape, magnets (41030-SMJ), or screws
- Mounting holes are compatible with NEMA and Euro wall boxes, with a user-provided screw (#6, 32 x 7 /8")
- 4-port unit covers wall opening when mounted to 1-gang NEMA wall boxes
- A self-tapping security screw (#6 x 1 /2"; not included) may be installed under the ID window for added cover security
- Tie-wrap anchor points are provided at all cable entry areas
- Cover has knockouts for raceway
- Housing colors: ivory, white

STANDARDS COMPLIANCE

- cULus Listed (UL 1863 & CAN/CSA-C22.2 No. 182.4)
- Complies with ANSI/TIA-568-C.0

PHYSICAL SPECIFICATIONS

- Dimensions: See page two.
- Materials: Fire-retardant ABS plastic rated UL 94V-0
- Capacity: Two and four individual QuickPort snap-in modules
- Mounting: Use screws, adhesive tape, or magnets. Two self-tapping screws and two pieces of 1-inch double-back adhesive tape are provided.

COUNTRY OF ORIGIN

Taiwan

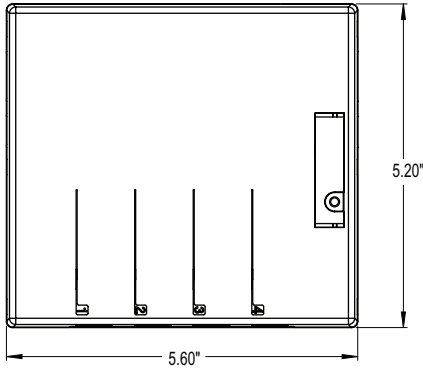
WARRANTY INFORMATION

For a copy of Leviton product warranties, visit www.leviton.com/warranty.

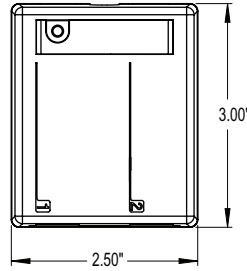
4S089-2xP, 4S089-4xP

ELECTRONIC FILES

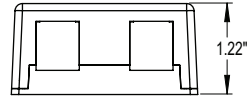
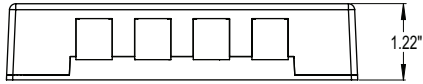
For CAD files, typical specs, or technical drawings (.DXF, .DWG), visit www.leviton.com.



4S089-4xP



4S089-2xP



4S089-2xP, 4S089-4xP

PART NUMBERS

Description	WHITE	IVORY
Surface-Mount QuickPort® Housing for Shielded Connectors, 2 port	4S089-2WP	4S089-2IP
Surface-Mount QuickPort Housing for Shielded Connectors, 4 port	4S089-4WP	4S089-4IP



Leviton Network Solutions
 2222 - 222nd St. SE
 Bothell, WA 98021-4416

Asia / Pacific
 T +1.631.812.6228
 E infoasean@leviton.com

Canada
 T +1.514.954.1840
 E pcservice@leviton.com

Caribbean
 T +1.954.593.1896
 E infocaribbean@leviton.com

China
 T +852.2774.9876
 E infochina@leviton.com

Colombia
 T +57.1.743.6045
 E infocolombia@leviton.com

tel 1-800-824-3005
 tel +1-425-486-2222
appeng@leviton.com
www.leviton.com

Europe
 T +33.6.8869.1380
 E infoeurope@leviton.com

India / SAARC
 T +971.4.886.4722
 E infoindia@leviton.com

Mexico
 T +52.55.5082.1040
 E lsamarketing@leviton.com

Middle East & Africa
 T +971.4.886.4722
 E lmeinfo@leviton.com

South Korea
 T +82.2.3273.9963
 E infokorea@leviton.com