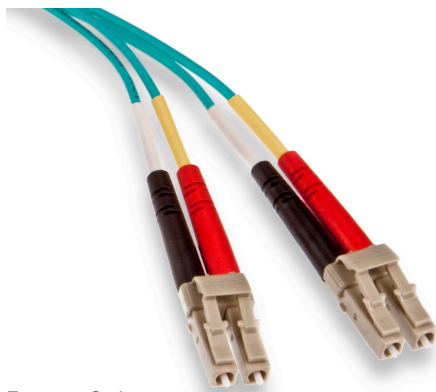


Economy Series Fiber Optic Patch Cords

APPLICATION

Leviton Fiber Optic Patch Cords are designed to interconnect or cross connect fiber networks within structured cabling systems. Leviton can produce any standard or custom fiber patch cord to meet your needs, and can offer quick-turn services for fast delivery.

Leviton offers two series of patch cords: Premium Series and Economy Series. Premium Series Patch Cords offer higher performance, optional custom labels, and optional 100% interferometer testing. Economy Series Patch Cords are a price-competitive solution that meets or exceeds all industry standards.



Economy Series
LC-LC Duplex, OM3 LOMM

SPECIFICATION

Multimode patch cords shall meet an optical return loss equal to or better than -25 dB per mated pair, and single-mode equal to or better than -50 dB for UPC polish, or -55 dB for APC polish. Insertion loss shall not exceed 0.4 dB per mated pair for multimode and 0.35 dB for single-mode. The patch cords shall be compliant with ANSI/TIA-568-C.3.

FEATURES

- Available in duplex configurations
- Industry-standard connector options
- All cables 100% optically tested
- Many fiber options: OM1, OM2, OM3, OM4, and OS2
- All cables are pre-labeled and individually bagged

DESIGN CONSIDERATIONS

- Offered in SC, ST, LC, or hybrid options
- All connectors have precision pre-radiused zirconia ferrules
- ST connectors have metal bodies
- Duplex clips included
- Single-mode SC available in UPC or APC

STANDARDS COMPLIANCE

Designed to meet the requirements of ANSI/TIA-568-C.3

COUNTRY OF ORIGIN

China

WARRANTY INFORMATION

For Leviton product warranties, visit leviton.com/warranty.

COLOR CODES	
Cable Jackets	
Single-mode	Yellow
Multimode (62.5/125 μm)	Orange
Multimode (50/125 μm)	Orange
Laser optimized multimode (50/125 μm)	Aqua
Connectors and adapters	
Single-mode	Blue
Single-mode, APC (angle polishing)	Green
Multimode (62.5/125 μm)	Beige
Multimode (50/125 μm)	Beige
Laser optimized multimode (50/125 μm)	Aqua (connectors are beige)
Boots (Polarity defined by the following color scheme)	
Single-Mode	Yellow and White
Multimode	Black and Red

PERFORMANCE SPECIFICATIONS		
	Multimode	Single-mode
Insertion Loss	0.4 dB Max	0.35 dB Max
Return Loss	>-25 dB	>-50 dB (UPC), >-55 dB (APC)
Durability	500 Matings	500 Matings
Repeatability	<0.2 dB	<0.2 dB
Operating Environment	-40° C to 75° C	-40° C to 75° C
Cable Retention	>20lbs / 89 N	>20lbs / 89 N
Rohs	Yes	Yes

PRODUCT SPECIFICATIONS
Economy Series Fiber Optic Patch Cords



Economy Series Fiber Optic Patch Cords

PERFORMANCE SPECIFICATIONS (CONT.)

Cable Performance											
Fiber Type	Maximum Attenuation (db/km)				Bandwidth (MHz*km)		Transmission Distance (meters)				
	850nm	1300nm	1310nm	1550nm	850nm	1300nm	100Mb	1GbE	10GbE	40GbE	10GbE
Single-mode (OS2)	N/A	N/A	0.4	0.3	N/A	N/A	>5,000 @ 1310nm		>10,000 @ 1310nm	NA	NA
62.5/125 µm MM (OM1)	3.5	1.0	N/A	N/A	200	500	300/2000 @ 850/1300nm	300/600 @ 850/1300nm	36/300 @ 850/1300nm	NA	NA
50/125 µm MM (OM2)	3.0	1.0	N/A	N/A	950	500		750/600 @ 850/1300nm	150/300 @ 850/1300nm	NA	NA
50/125 µm LO (10G-300m) MM (OM3)	3.0	1.0	N/A	N/A	2,000 ¹	500 ²		1,000/600 @ 850/1300nm	300/300 @ 850/1300nm	100 @ 850nm	100 @ 850nm
50/125 µm LO (10G-550m) MM (OM4)	3.0	1.0	N/A	N/A	4,900 ¹	500 ²		1,210/600 @ 850/1300nm	600/300 @ 850/1300nm	150 @ 850nm	150 @ 850nm

¹ The effective modal bandwidth is determined based on an overfill launch (OFL per ANSI/TIA-455-204, except on laser-optimized fiber types).

² 10GbE transmission @ 1,300 nm only applies to 10GBASE-LX4 (CWDM).

62.5/125 µm MULTIMODE (OM1) OFNR DUPLEX

DESCRIPTION	LENGTH (METERS)	DUPLEX
SC-SC	1	62DSC-M01
SC-SC	2	62DSC-M02
SC-SC	3	62DSC-M03
SC-SC	5	62DSC-M05
SC-SC	10	62DSC-M10
ST-ST	1	62DST-M01
ST-ST	2	62DST-M02
ST-ST	3	62DST-M03
ST-ST	5	62DST-M05
ST-ST	10	62DST-M10
LC-LC	1	62DLC-M01
LC-LC	2	62DLC-M02
LC-LC	3	62DLC-M03
LC-LC	5	62DLC-M05
LC-LC	10	62DLC-M10
SC-ST	1	62DCT-M01
SC-ST	2	62DCT-M02
SC-ST	3	62DCT-M03
SC-ST	5	62DCT-M05
SC-ST	10	62DCT-M10
SC-LC	1	62DCL-M01
SC-LC	2	62DCL-M02
SC-LC	3	62DCL-M03
SC-LC	5	62DCL-M05
SC-LC	10	62DCL-M10

50/125 µm MULTIMODE (OM2) OFNR DUPLEX

DESCRIPTION	LENGTH (METERS)	DUPLEX
SC-SC	1	50DSC-M01
SC-SC	2	50DSC-M02
SC-SC	3	50DSC-M03
SC-SC	5	50DSC-M05
SC-SC	10	50DSC-M10
ST-ST	1	50DST-M01
ST-ST	2	50DST-M02
ST-ST	3	50DST-M03
ST-ST	5	50DST-M05
ST-ST	10	50DST-M10
LC-LC	1	50DLC-M01
LC-LC	2	50DLC-M02
LC-LC	3	50DLC-M03
LC-LC	5	50DLC-M05
LC-LC	10	50DLC-M10
SC-LC	1	50DCL-M01
SC-LC	2	50DCL-M02
SC-LC	3	50DCL-M03
SC-LC	5	50DCL-M05
SC-LC	10	50DCL-M10

Leviton Network Solutions
 2222 - 222nd St. SE
 Bothell, WA 98021-4416

Asia / Pacific
 T +1.631.812.6228
 E infoasean@leviton.com

Canada
 T +1.514.954.1840
 E pcservice@leviton.com

Caribbean
 T +1.954.593.1896
 E info@caribbean@leviton.com

China
 T +852.2774.9876
 E infochina@leviton.com

Colombia
 T +57.1.743.6045
 E info@colombia@leviton.com

tel 1-800-824-3005
 tel +1-425-486-2222
 appeng@leviton.com
 www.leviton.com

Europe
 T +33.6.8869.1380
 E infoeurope@leviton.com

India / SAARC
 T +971.4.886.4722
 E infoindia@leviton.com

Mexico
 T +52.55.5082.1040
 E lsamarketing@leviton.com

Middle East & Africa
 T +971.4.886.4722
 E lmeinfo@leviton.com

South Korea
 T +82.2.3273.9963
 E info@korea@leviton.com

50/125 µm LOMM (OM3) OFNR DUPLEX		
DESCRIPTION	LENGTH (METERS)	DUPLEX
SC-SC	1	5LDSC-M01
SC-SC	2	5LDSC-M02
SC-SC	3	5LDSC-M03
SC-SC	5	5LDSC-M05
SC-SC	10	5LDSC-M10
LC-LC	1	5LDLC-M01
LC-LC	2	5LDLC-M02
LC-LC	3	5LDLC-M03
LC-LC	5	5LDLC-M05
LC-LC	10	5LDLC-M10
SC-LC	1	5LDCL-M01
SC-LC	2	5LDCL-M02
SC-LC	3	5LDCL-M03
SC-LC	5	5LDCL-M05
SC-LC	10	5LDCL-M10

50/125 µm LOMM (OM4) OFNR DUPLEX		
DESCRIPTION	LENGTH (METERS)	DUPLEX
LC-LC	1	54DLC-M01
LC-LC	2	54DLC-M02
LC-LC	3	54DLC-M03
LC-LC	5	54DLC-M05
LC-LC	10	54DLC-M10
SC-LC	1	54DCL-M01
SC-LC	2	54DCL-M02
SC-LC	3	54DCL-M03
SC-LC	5	54DCL-M05
SC-LC	10	54DCL-M10

9/125 µm SINGLE-MODE (OS2) OFNR DUPLEX		
DESCRIPTION	LENGTH (METERS)	DUPLEX
SC-SC	1	UPDSC-S01
SC-SC	2	UPDSC-S02
SC-SC	3	UPDSC-S03
SC-SC	5	UPDSC-S05
SC-SC	10	UPDSC-S10
LC-LC	1	UPDLC-S01
LC-LC	2	UPDLC-S02
LC-LC	3	UPDLC-S03
LC-LC	5	UPDLC-S05
LC-LC	10	UPDLC-S10
SC-LC	1	UPDCL-S01
SC-LC	2	UPDCL-S02
SC-LC	3	UPDCL-S03
SC-LC	10	UPDCL-S10
ST-ST	1	UPDST-S01
ST-ST	2	UPDST-S02
ST-ST	3	UPDST-S03
ST-ST	10	UPDST-S10
SC-ST	1	UPDCT-S01
SC-ST	2	UPDCT-S02
SC-ST	3	UPDCT-S03
SC-ST	10	UPDCT-S10

APC SINGLE-MODE (OS2) SIMPLEX		
DESCRIPTION	LENGTH (METERS)	SIMPLEX
SC-SC	1	APSSC-S01
SC-SC	2	APSSC-S02
SC-SC	3	APSSC-S03
SC-SC	5	APSSC-S05
SC-SC	10	APSSC-S10



Leviton Network Solutions
2222 - 222nd St. SE
Bothell, WA 98021-4416

tel 1-800-824-3005
tel +1-425-486-2222
appeng@leviton.com
www.leviton.com

Asia / Pacific
T +1.631.812.6228
E infoasean@leviton.com

Europe
T +33.6.8869.1380
E infoeurope@leviton.com

Canada
T +1.514.954.1840
E pcservice@leviton.com

India / SAARC
T +971.4.886.4722
E infoindia@leviton.com

Caribbean
T +1.954.593.1896
E infocaribbean@leviton.com

Mexico
T +52.55.5082.1040
E lsamarketing@leviton.com

China
T +852.2774.9876
E infochina@leviton.com

Middle East & Africa
T +971.4.886.4722
E lmeinfo@leviton.com

Colombia
T +57.1.743.6045
E infocolombia@leviton.com

South Korea
T +82.2.3273.9963
E infokorea@leviton.com