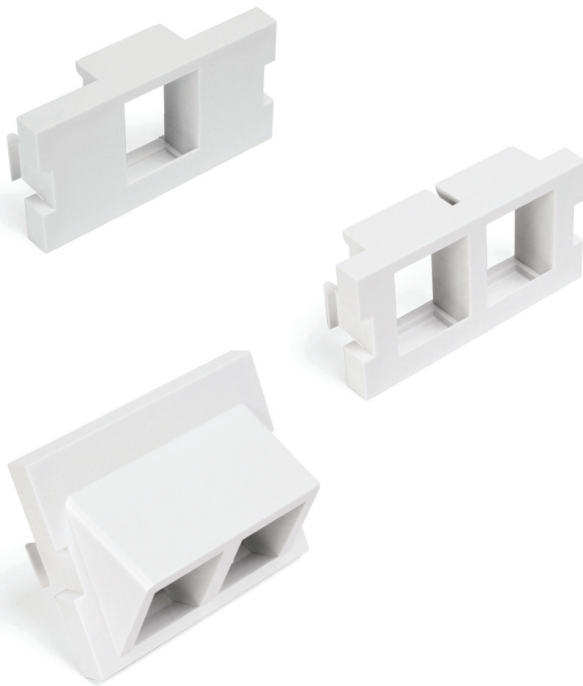


QuickPort® Adapter MOS Modules

APPLICATION

QuickPort Adapter MOS Modules snap into MOS wallplates and surface-mount MOS housings from the front or side. The adapters accept all QuickPort connectors, including category-rated connectors, HDMI®, DVI, USB, S-video, F-connectors, and fiber adapters.



SPECIFICATION

Outlet adapter modules shall comply with ANSI/TIA-568-C requirements. They shall be made of fire-retardant plastic. Modules shall be interchangeable, mounting between various multimedia surface- and flush-mount outlets. They shall be capable of housing one-to-two QuickPort connectors. Modules shall be capable of maintaining a minimum cable bend-radius within the area of minimum NEMA box enclosures.

FEATURES

- Modules load into housings from the front or side
- Available in white, light almond, ivory, grey, and black
- Available in 1 and 1.5 units high

DESIGN CONSIDERATIONS

- Modules fit MOS housings and wallplates only
- 1.5 unit high modules have a 45-degree exit/angle
- Use angled modules when a low-profile exit is desired
- Place angled modules in bottom of wallplate to allow cable clearance at top of wall opening
- 1.5-unit modules used in the top half of the wallplate may result in an interference when using fiber connectors and the fiber storage ring (41290-DRx)

STANDARDS COMPLIANCE

- ANSI/TIA-568-C compliant

PHYSICAL SPECIFICATIONS

Dimensions: See page two

Materials: Fire-retardant plastic, rated UL 94V-0

Mounting: Snaps into MOS wallplate or surface-mount housing

COUNTRY OF ORIGIN

USA

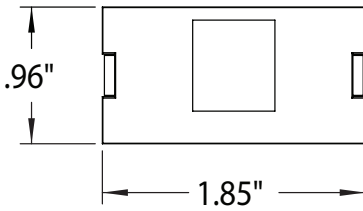
WARRANTY INFORMATION

For a copy of Leviton product warranties, visit www.leviton.com/warranty.

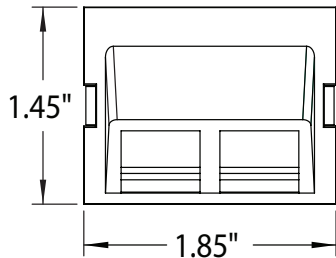
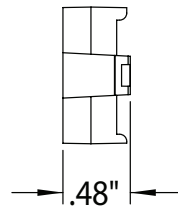
ELECTRONIC FILES

For CAD files, typical specs, or technical drawings (.DXF, .DWG), visit www.leviton.com.

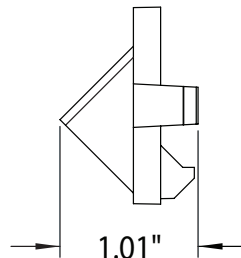
41291-2Qx, 41291-1Mx, 41294-2Qx



41291-1Mx, 41291-2Qx (1 unit high)



41294-2Qx (1.5 units high)



QUICKPORT® ADAPTER MOS MODULES

Description	White	Light Almond	Ivory	Grey	Black
1 Port, 1 Unit High	41291-1MW	41291-1MT	41291-1MI	41291-1MG	41291-1ME
2 Ports, 1 Unit High	41291-2QW	41291-2QT	41291-2QI	41291-2QG	41291-2QE
2 Ports, 1.5 Units High	41294-2QW	41294-2QT	41294-2QI	41294-2QG	41294-2QE



Leviton Network Solutions
 2222 - 222nd St. SE
 Bothell, WA 98021-4416

Asia / Pacific
 T +1.631.812.6228
 E infoasean@leviton.com

Canada
 T +1.514.954.1840
 E pcservice@leviton.com

Caribbean
 T +1.954.593.1896
 E infocaribbean@leviton.com

China
 T +852.2774.9876
 E infochina@leviton.com

Colombia
 T +57.1.743.6045
 E infocolombia@leviton.com

tel 1-800-824-3005
 tel +1-425-486-2222
 appeng@leviton.com
 www.leviton.com

Europe
 T +33.6.8869.1380
 E infoeurope@leviton.com

India / SAARC
 T +971.4.886.4722
 E infoindia@leviton.com

Mexico
 T +52.55.5082.1040
 E lsamarketing@leviton.com

Middle East & Africa
 T +971.4.886.4722
 E lmeinfo@leviton.com

South Korea
 T +82.2.3273.9963
 E infokorea@leviton.com