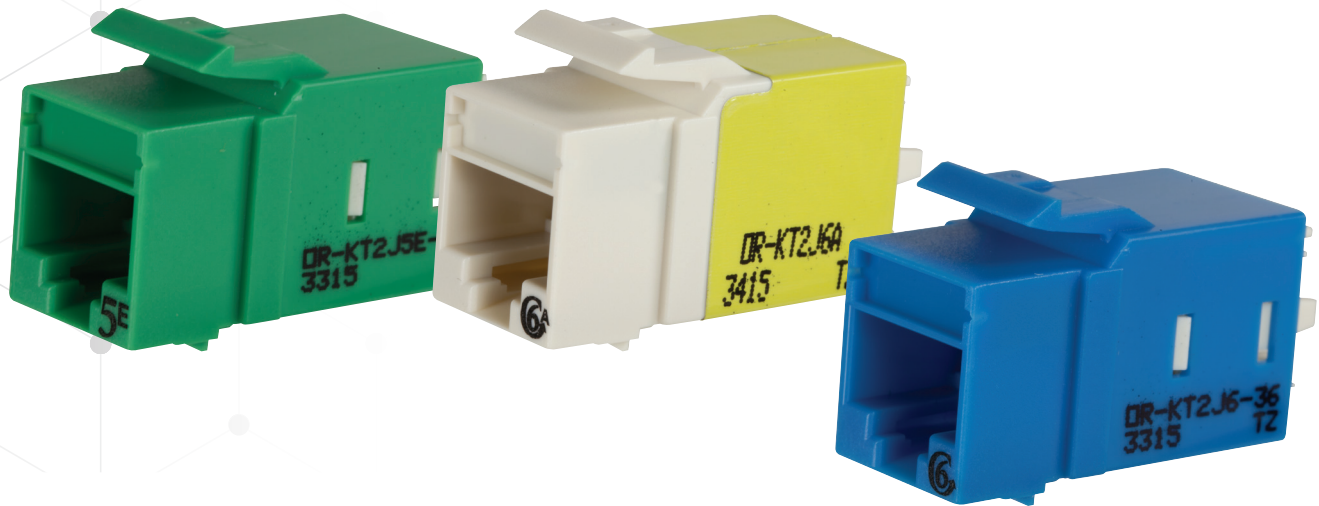


KT2J EASY TERM KEYSTONE JACKS



BENEFITS

- Available in CAT6A, CAT6 and CAT5e
- Free termination tool in each carton or bulk pack
- Quicker installation time
- Compatible with all TechChoice panels, plates & housings

KT2J jacks, available in CAT6A, CAT6 and CAT5e, represent the next generation of keystone connectivity. These jacks utilize an installer friendly lacing cap termination with a free termination tool supplied with every carton or bulk pack. This proven termination with the supplied tool has been recognized to reduce installation time especially for larger & stiffer CAT6 and CAT6A cabling.

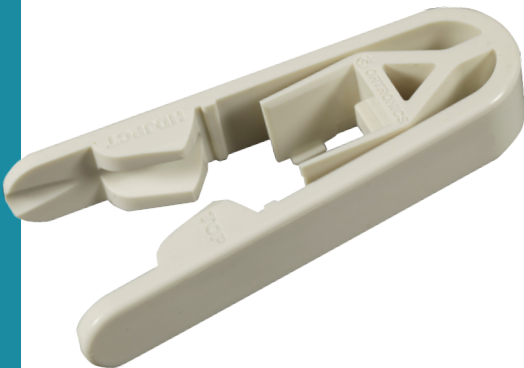
KT2J jacks are compatible with all TechChoice plates, frames, bezels, surface boxes and TechChoice Icons. All KT2J jacks meet their listed component performance standards. These jacks are also approved elements of nCompass CAT6a, CAT6 and CAT5e solutions.

KT2J JACKS ARE AVAILABLE:

- Individually bagged in carton quantities of 20 with a free termination tool OR
- In resealable bulk bags of 25 with a free termination tool.

Like all Legrand® copper products, these jacks are RoHS compliant. KT2J jacks also have published Product Environmental Profiles (PEPs) to contribute toward LEED credit.

The keystone footprint allows flexibility in installation scheduling because its rear insertion into the faceplates or panels allows the technician to complete the termination before or during the construction process.



GENERAL INFORMATION

- Footprint: Keystone
- UL Standards Tested: UL 1863
- CUL Listing No: E131600

DIMENSIONS

- Depth - U S: 1.37 in
Metric: 34.80 mm
- Height - U S: .88 in
Metric: 22.35 mm
- Width - U S: .628 in
Metric: 15.95 mm

FEATURES

- Available CAT6A, CAT6 and CAT5e supports standards compliant installs.
- Easy lace wiring cap: Quick, simplified, user-friendly, reduces wiring time
- Free termination tool in each carton of 20 jacks: no extra / special termination tool required
- Available in single or bulk pack
- Rear loading: preferred mounting for panels and bag & tag workstation
- Icon compatible, Category marking on jack face: Supports TIA-606 requirements
- RoHS compliant, Published PEP



KT2J KEYSTONE JACK		PART NUMBER		
Single Pack	COLOR	CATEGORY 6A	CATEGORY 6	CATEGORY 5E
KT2J Keystone Jack single pack with new time saving lacing cap termination and a free termination tool in every carton.	Fog White	KT2J6A	KT2J6	KT2J5E
	Black	KT2J6A-00	KT2J6-00	KT2J5E-00
	Elec Ivory	KT2J6A-13	KT2J6-13	KT2J5E-13
	Blue	KT2J6A-36	KT2J6-36	KT2J5E-36
	Red	KT2J6A-42	KT2J6-42	
	Orange	KT2J6A-43	KT2J6-43	KT2J5E-43
	Yellow	KT2J6A-44	KT2J6-44	
	Green	KT2J6A-45	KT2J6-45	KT2J5E-45
	Gray	KT2J6A-78	KT2J6-78	
	White	KT2J6A-88	KT2J6-88	KT2J5E-88
	WM Ivory	KT2J6A-99	KT2J6-99	

KT2J KEYSTONE JACK		PART NUMBER		
Bulk Pack	COLOR	CATEGORY 6A	CATEGORY 6	CATEGORY 5E
KT2J Keystone Jack bulk pack 25 jacks in a resealable bag with new time saving lacing cap termination and free termination tool.	Fog White	KT2J6A25	KT2J625	KT2J5E25
	Black	KT2J6A25-00	KT2J625-00	KT2J5E25-00
	Blue	KT2J6A25-36	KT2J625-36	KT2J5E25-36
	White	KT2J6A25-88	KT2J625-88	KT2J5E25-88

designed to be better.™

