

SSB-1900DEEP

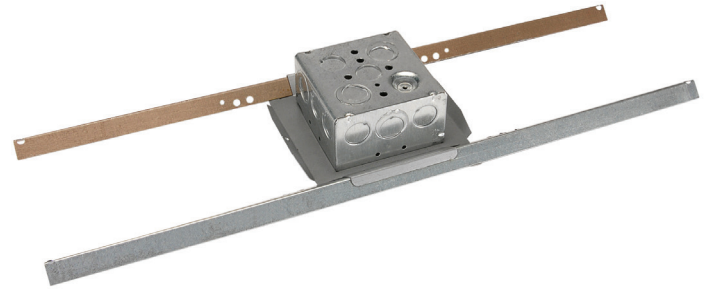
Drop Ceiling Adjustable Load Support
with 2-5/16" D 1900 Box

**GENERAL DESCRIPTION**

The SSB-1900DEEP is a rust resistant steel, adjustable, load bearing support with a steel, 30.3 CID, 1900 electrical junction box.

INTENDED USE - Indoor or Protected Outdoor Environment

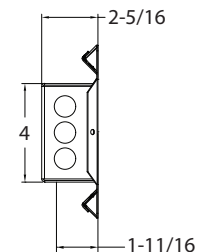
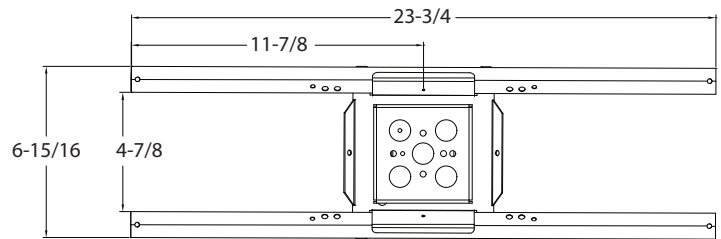
Installation	Parallel to floor plane in a suspended ceiling structure; maximum span of 24" in one dimension.
---------------------	---

**JUNCTION BOX ACCESS**

All 4 Vertical Sides	2x 1/2" k/o conduit 1x 1/2" / 3/4" eccentric k/o conduit
Top Horizontal Surface	2 x 1/2" k/o conduit 2x 1/2" / 3/4" eccentric k/o conduit

MECHANICAL ATTACHMENT

Bottom Horizontal	2x 8-32 formed threads to attach 2-gang Surface adapter plate if required
Tie-Offs	4x Total, 1 each at end of bridge rail 2x Terminal plate



Recommended construction sequences, installation instructions, and A&E Specifications are available in various formats in the Specs and Diagrams section at:
www.QuamSpeakers.com

© 2016 Quam-Nichols Company reserves the right to make changes and/or improvements to its products at any time and without notice.



QUAM-NICHOLS COMPANY, INC.
234 East Marquette Road. Chicago, IL. 60637
t: 1-800-NEED-NOW (800-633-3669)
f: 1-888-NEED-NOW (888-633-3669)
e: NeedNow@QNC.com
www.QuamSpeakers.com